

FOR LEASE

85 E. Ramona Expressway
Perris, CA 92571
0000000 Sq. Ft. Available

HIGHLIGHTS:

- Excellent street and freeway visibility
- Ideal site for Restaurants, Office, Banks, Financial Services, Fitness Center, and many other uses
- In the heart of a strong growth area with great demographics
- Available space ranging from 1000 – 13,700 square feet
- Heavy traffic count: 25,116 cars per day
- Flexible lease terms
- Unbeatable rates
- Great for neighborhood services
- Call for Details on our "Free Rent Promotion"

Contact:

JOHN GOMEZ

Leasing Agent
john@atlasland.com

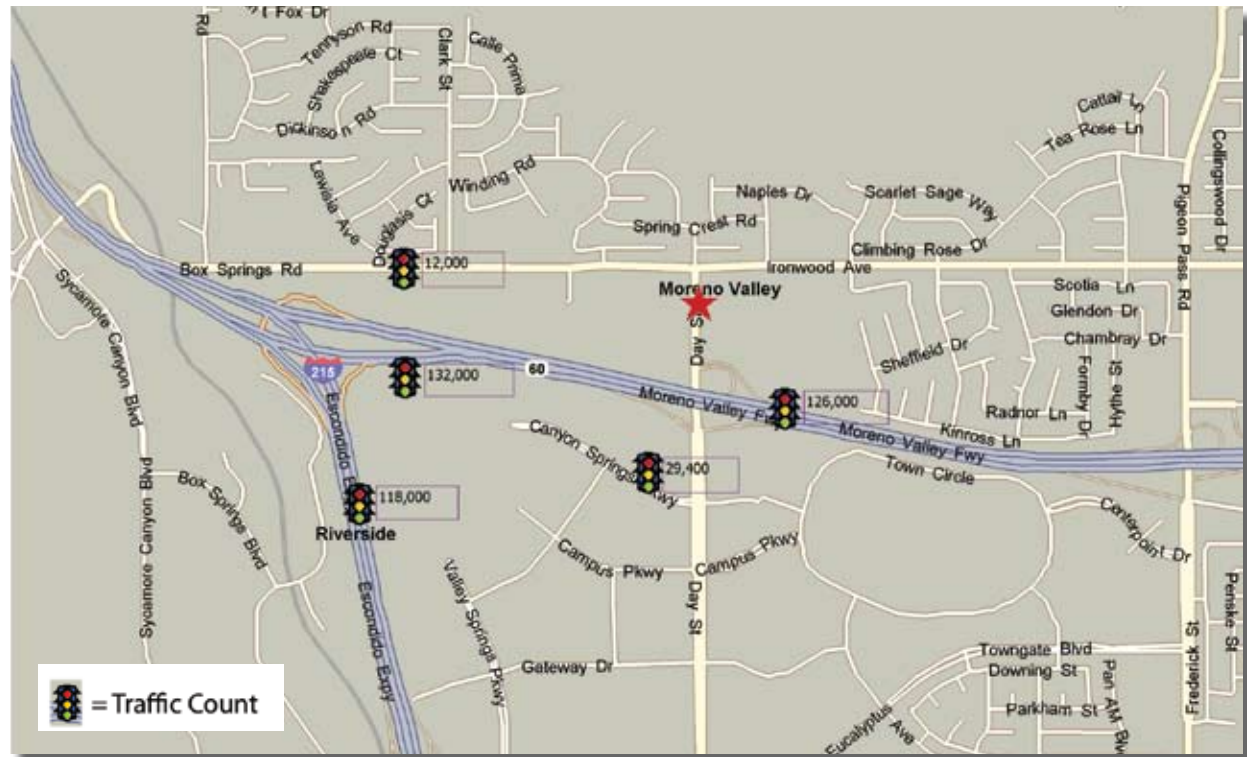
O: (951) 369-0308
C: (909) 203-0537



Introductory Offer:
**2 MONTHS
FREE RENT**

Expressway Center

PERRIS
CALIFORNIA



26371 Avery Parkway Suite B
Mission Viejo, CA 92692

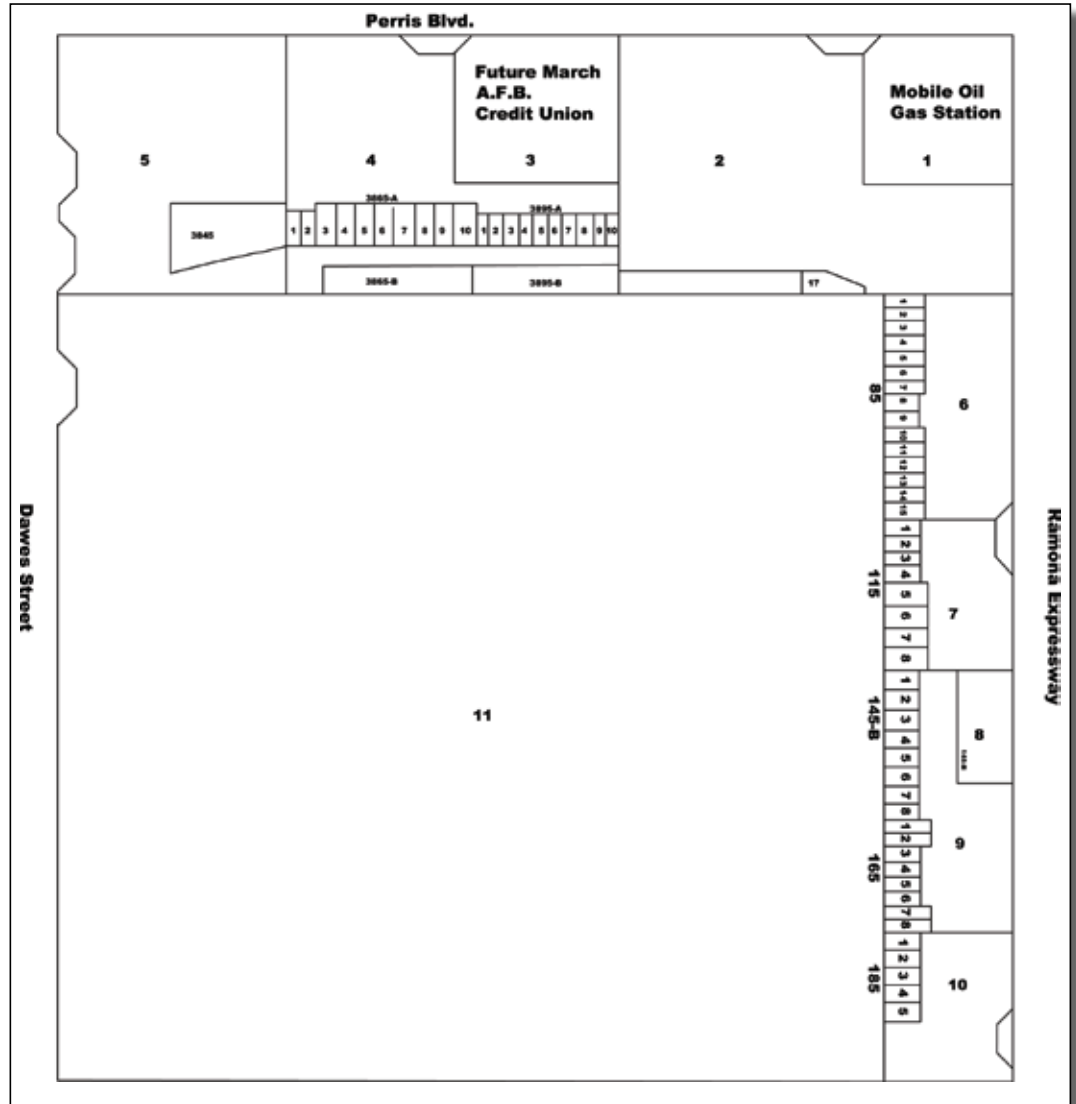
www.atlasland.com



Although all information furnished regarding for sale, rental or financing is from sources we deem reliable, such information had not been verified and no express representation is made nor is any to be implied as to the accuracy thereof, and it is submitted subject to errors, omissions, changes of price, rental or other conditions, prior sale, lease or financing, or withdrawal without notice.
Licensed by the California Department of Real Estate (License No. 01804825)



POPULATION	1-mile	3-miles	5-miles
2007 Total Population	874	51,923	128,764
2012 Projected Total Population	1,057	65,117	154,785
2007 Average Household Income	\$51,603	\$64,484	\$59,920
I-215 Traffic Count			99,190
Perris BLVD Traffic Count			22,385



Contact:

JOHN GOMEZ

Leasing Agent

john@atlasland.com

O: (951) 369-0308

C: (909) 203-0537

26371 Avery Parkway Suite B

Mission Viejo, CA 92692

www.atlasland.com



Although all information furnished regarding for sale, rental or financing is from sources we deem reliable, such information had not been verified and no express representation is made nor is any to be implied as to the accuracy thereof, and it is submitted subject to errors, omissions, changes of price, rental or other conditions, prior sale, lease or financing, or withdrawal without notice. Licensed by the California Department of Real Estate (License No. 01804825)